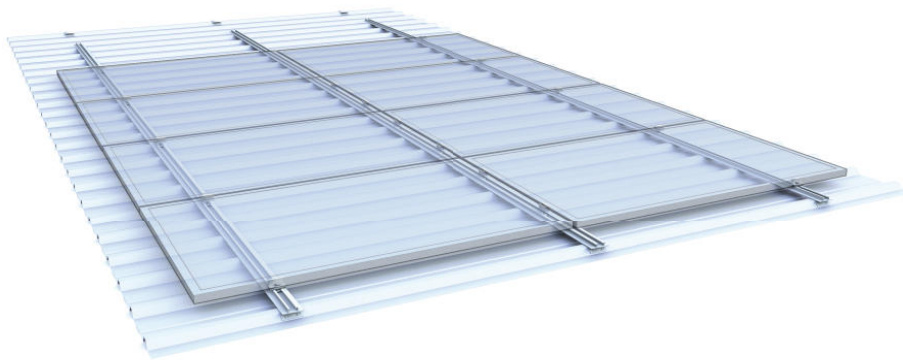


ExtruSun Integrated roof Series ECI-C



Structure anchored to the roof and structure of the warehouse or the building.

Materials: Aluminium and stainless steel A2 hardware.

Possibility of anodized aluminium for coastal areas / other requirements (aggressive industrial environments,...).

Panels are anchored with clips (fitted according to the thickness of the panel).

Adaptable to:

- any kind of roof, inclination according to the roof..
- any kind of module. Design based on the module and the panel layout, a solution for each project.

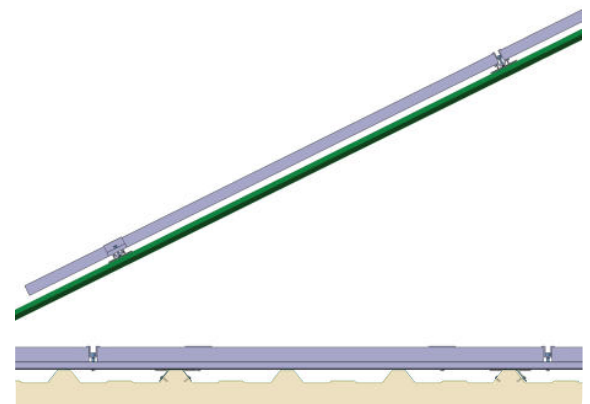
In compliance with CTE (EUROCODE) regulations 130 KN/m² snow and 130km/h wind.

Construction advantages

- Complete integration of the installation, with a minimum visual impact.
- Very lightweight.
- Easy and quick to mount.
- Adaptable to any kind of panel.
- Design produced for building work and installation.
- Adaptable to any possible modification in building work *
- All materials under warranty of 25 years.

*(Previous consultation with ExtruSun Engineering)

Type of profile	Extruded aluminium 1st fusion. Alloy 6063-T5
Density of aluminium	2,35 gr/cm ³
Hardware (screws, etc)	Stainless steel (A2)
Apprx. weight	3,16 kg/m.l (including hardware)



Wind load	Qe=2,6 KN/m ² (more unfavourable peninsular wind zone). Speed Ref. 130 Km/h, industrial zone h=30m
Snow Load	1,2 kN/m ² (120 Kg/m ²), topographical locations located between 0 and 1,000 high safety factor for more unfavourable zones within the country.

